

Bohnenkamp

■ ■ ● Moving Professionals

SIFATNI

TEKSHIRISH



Qurilish texnikalari uchun shinalar

Kameralar, klapanlar, g'ildirak lentalari



«BONENKAMP» KOMPANIYASI
RASMIY VAKIL

BKT

GROWING TOGETHER

K KENDA



www.bohnenkamp.uz

Mini yuklagichlar uchun shinalar



O'LCHOV (RAZMER)	SHINA QATLAMI DARAJASI	PROTEKTOR DIZAYNI	TL/TT	57 07562+	TASHQI DIAMETER (mm)	KENGLIGI (mm)	L/SI	MAKSIMUM YUKLASH (10 km/soat tezlikda)	MAKS. BOSIM (bar)	G'ILDIRAK ENI KENGLIGI (dyuyum)	GRUNTOZATSEPTLAR SONI	PROTEKTORNING CHUQURLIGI (mm)
12"												
23x8.50-12	6	KENDA K395	TL	129105	572	216	101A2	825	3.10	7.00	18	12
23x8.50-12	12	KENDA K395	TL	150628	575	212	107A2	975	6.90	7.00	18	12
26x12-12	10	KENDA K395	TL	265698	670	304	125A2	1650	4.50	10.50	15	16.5
15"												
27x8.50-15	6	KENDA K395	TL	146348	674	227	96A2	710	3.10	7.00 (8.00)	20	12
16.5"												
10-16.5	10	KENDA K395	TL	146232	785	271	135A2	2180	4.80	8.25	21	18
10-16.5	10	KENDA K601 Rock Grip	TL	150994	783	271	135A2	2180	4.80	8.25	26	25.5
10-16.5	14	KENDA K612 KANNIBAL	TL	589633	790	273	143A2	2725	7.25	8.25	32	36
12-16.5	10	KENDA K395	TL	128177	855	318	141A2	2575	4.50	9.75	21	19
12-16.5	12	KENDA K395	TL	146270	860	316	145A2	2900	5.50	9.75	21	19
12-16.5	12	KENDA K601 Rock Grip	TL	151014	855	326	145A2	2900	5.50	9.75	32	25.5
12-16.5	14	KENDA K612 KANNIBAL	TL	035719	855	332	147A2	3075	6.20	9.75	32	34.5

* Belgilangan tezlikda shinalarga tushadigan yuk

FR - erkin aylanadigan g'ildirak

DW - harakatlantiruvchi g'ildirak

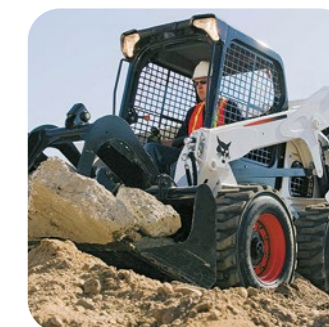


KENDA K395

KENDA K601 Rock Grip

KENDA K612 KANNIBAL

KENDA shinalari - skidli yuk ortuvchilar uchun ideal tanlov



Kenda K395 Power Grip HD

Shina yo'l qurilishi, tuproqni ko'chirish, hududni tozalash, katta yoki quyma materiallarni yuklash uchun mini yuklagichlarga o'rnatiladi.

- ▶ Maxsus 3 bosqichli gruntozatsep eskirishni kamaytiradi va xizmat muddatini oshiradi.
- ▶ Maxsus ishlab chiqilgan yon devor shinalarning ishlash muddatini oshiradi, yon ta'sirlarni oldini oladi va g'ildirak chekkasini shikastlanishdan himoya qiladi.
- ▶ Kuchaytirilgan taglik qatlami shinani kesilish va teshilishdan qo'shimcha himoya qiladi.



Kenda K601 Rock Grip HD

Shina qattiq sirtlarda ishlash uchun mo'ljallangan. Ushbu shinalar tekis bo'lmagan sirtlarda yo'l qurilishi va yuklash ishlari - omborlar, qayta ishlash zavodlari, konlardagi ishlar uchun ideal tanlovdur.

- ▶ Maxsus kauchuk birikma va protektor dizayni qattiq sirtlarda mukammal yurish imkonini beradi.
- ▶ Maxsus ishlab chiqilgan yon devor shinalarning ishlash muddatini oshiradi, yon ta'sirlarni oldini oladi va g'ildirak chekkasini shikastlanishdan himoya qiladi.
- ▶ Kuchaytirilgan taglik qatlami shinani kesilish va teshilishdan qo'shimcha himoya qiladi.
- ▶ Maxsus protektor dizayni va karkas konstruksiyasi tufayli shinalar kontakt dog'i va yuqori tezlik indeksiga ega.



Greyderlar uchun shinalar



O'LCHOV (RAZMER)	SHINA QATLAMI DARAJASI	PROTEKTOR DIZAYNI	TL/TT	57 07562+	TASHQI DIAMETER (mm)	KENGLIGI (mm)	LI/SI	TRA kod	kg/km/soat* (1)	kg/km/soat* (2)	MAKS. BOSIM (bar)	G'ILDIRAK ENI KENGLIGI (dyuyim)	GRUNTOZATSEPTLAR SONI	PROTEKTORNING CHUQUURLIGI (mm)
24"														
13.00-24	12	BKT Trac Grader +	TL	292267	1280	340	143A8	G2	2725/40	2430/50	3.00	8.00 (9.00/10.00)	21	25
14.00-24	16	BKT Trac Grader +	TL	292274	1348	364	153A8	G2	3650/40	-	3.50	8.00 (9.00/10.00)	20	25
14.00-24	16	BKT Super Grader	TL	605098	1335	364	153A8	G2	3650/40	-	3.50	8.00 (9.00/10.00)	21	25
14.00-24	16	BKT XL Grip	TL	605142	1345	365	153A8	G3	3650/40	-	3.50	8.00 (9.00/10.00)	32	30
14.00R24	-	BKT Earthmax SR 22	TL	025892	1370	366	175A2/153A8	G2/L2	6900/10	3650/40	5.50	8.00 (9.00/10.00)	28	25
14.00R24	-	BKT Earthmax SR 25 Plus	TL	022508	1372	359	175A2/153A8	G2/L2	6900/10	3650/40	5.50	8.00 (9.00)	32	25
16.00-24	16	BKT Super Grader	TL	605159	1450	430	160A8	G2	4500/40	-	3.00	10.00	18	30
16.00-24	16	BKT XL Grip	TL	605166	1450	430	160A8	G3	4500/40	-	3.00	10.00	34	32.5
25"														
15.5-25	12	BKT AT 603	TL	034809	1265	410	-	E2/G2/L2	5600/10	3250/50	4.00	12.00	20	25.5
15.5-25	12	BKT GR 288	TL	376974	1270	385	168A2/142A8	G2/L2	5600/10	2650/40	4.00	12.00	22	24
15.5R25	-	BKT Earthmax SR 22	TL	037206	1275	385	169A2/146A8	G2/L2	5800/10	3000/40	5.00	12.00	38	28
15.5R25	-	BKT Earthmax SR 23	TL	023071	1264	383	169A2/146A8	G2/L2	5800/10	3000/40	5.00	12.00	30	27
17.5-25	16	BKT GR 288	TL	352824	1330	445	177A2/150A8	G2/L2	7300/10	3350/40	4.75	14.00	21	26
17.5-25	24	BKT EM 936 DUAL BEAD	TL	040482	1340	450	-	E2/L2	10000/10	-	7.00	14.00	22	26.5
17.5R25	-	BKT Earthmax SR 22	TL	022510	1350	452	176A2/153A8	G2/L2	7100/10	3650/40	5.00	14.00	36	28
17.5R25	-	BKT Earthmax SR 23	TL	037191	1345	448	176A2/153A8	G2/L2	7100/10	3650/40	5.00	14.00	32	27
20.5-25	16	BKT GR 288	TL	482224	1480	520	181A2/156A8	G2/L2	8250/10	4000/40	3.50	17.00	21	29
20.5-25	20	BKT GR 288	TL	604138	1480	520	186A2/160A8	G2/L2	9500/10	4500/40	4.50	17.00	21	29
20.5-25	16	BKT Snow-Ride	TL	023075	1492	537	181A2	-	8250/10	-	3.50	17.00	28	31
20.5R25	-	BKT Earthmax SR 22	TL	022511	1490	525	186A2/161A8	G2/L2	9500/10	4625/40	5.00	17.00	32	32
23.5-25	20	BKT GR 288	TL	313146	1610	595	191A2/167A8	G2/L2	10900/10	5450/40	3.75	19.50	21	31
23.5R25	-	BKT Earthmax SR 22	TL	037208	1614	610	201A2/185B	E2/L2	14500/10	9250/50	6.00	19.50	30	33.5

* Belgilangan tezlikda shinalarga tushadigan yuklanish
FR - erkin aylanadigan g'ildirak
DW - harakatlantiruvchi g'ildirak



BKT Snow-Ride BKT Earthmax SR 25 Plus BKT Earthmax SR 22



BKT Trac Grader + BKT Super Grader BKT XL Grip BKT AT 603 BKT GR 288

Ekskavatorlar uchun shinalar



O'LCHOV (RAZMER)	SHINA QATLAMI DARAJASI	PROTEKTOR DIZAYNI	TL/TT	57 07562+	TASHQI DIAMETER (mm)	KENGLIGI (mm)	LI/SI	TRA kod	kg/km/soat* (1)	kg/km/soat* (2)	MAKS. BOSIM (bar)	G'ILDIRAK ENI KENGLIGI (dyuyim)	GRUNTOZATSEPTLAR SONI	PROTEKTORNING CHUQUURLIGI (mm)
20"														
8.25-20**	14	BKT EM 936	TT	25845	980	235	133B	E2	2060/50	-	6.75	6.50 (6.00/7.00)	25	18
9.00-20**	14	BKT EM 936	TT	484013	1012	256	140B	E2	2500/50	-	7.00	7.00 (6.50/7.50)	25	19.5
9.00-20**	16	BKT EM 939	TT	040169	1025	260	142B	E3	2650/50	-	7.75	7.00 (6.50/7.50)	41	26
10.00-20**	16	BKT EM 934	TT	022859	1060	275	146B	E2	3000/50	-	7.50	7.50 (8.00)	34	24
10.00-20**	16	BKT EM 936	TT	382777	1050	275	146B	E2	3000/50	-	7.50	7.50 (7.00/8.00)	24	24
10.00-20**	16	BKT EM 936 Super	TT	040935	1080	277	146B	E2	3000/50	-	7.50	7.50 (7.00/8.00)	-	21.5
10.00-20**	18	BKT EM 939	TT	040168	1075	280	149B	E3	3250/50	-	8.50	7.50 (7.00/8.00)	43	26
11.00-20**	16	BKT EM 936	TT	022860	1110	300	149B	E2	3250/50	-	7.20	8.00 (7.50/8.50)	24	24.5
22.5"														
600/40-22.5 DUAL BEAD	20	BKT TR 678 IND	TL	034812	1085	615	157A8/169A8	-	4125/40 DW	5800/40 FR	4.10	20.00	18	38
24"														
20-24 (22/70-24)	12	BKT EM 936	TL	010935	1390	535	173A2/158B	E2/G2/L2	6500/10	4250/50	3.00	16.00	23	30

* Belgilangan tezlikda shinalarga tushadigan yuklanish
FR - erkin aylanadigan g'ildirak
DW - harakatlantiruvchi g'ildirak

** Shinalar to'plami sifatida taqdim etiladi (kameralar va g'ildirak lentasi bilan shinalar)



BKT EM 936 BKT EM 939 BKT EM 934 BKT EM 936 Super BKT TR 678 IND

Asfalt va tuqroq bilan ishlaydigan texnikalar uchun shinalar



O'LCHOV (RAZMER)	SHINA QATLAMI DARAJASI	PROTEKTOR DIZAYNI	TL/TT	57 07562+	TASHQI DIAMETER (mm)	KENGLIGI (mm)	YUQUVCHI KENGLIGI (mm)	LI/SI	TRA kod	kg/km/soat* (1)	kg/km/soat* (2)	MAKS. BOSIM (bar)	G'ILDIRAK ENI KENGLIGI (dyuym)	GRUNTO-ZATSEPTLAR SONI	PROTEKTORNING CHUQUURLIGI (mm)
15"															
7.50-15**	12	BKT Pac Master	TT	484068	790	225	197	142A2	C	2650/10	2120/15	7.50	6.00 (6.50)	-	-
205/60-15	6	BKT Pac Master	TL	608389	640	200	200	110A	C	1060/10	850/15	3.25	6.00 (7.00)	-	-
9.5/65-15	6	BKT Pac Master	TT	026363	675	235	235	118A2	C	1320/10	1060/15	3.25	7.00	-	-
16"															
7.50-16**	14	BKT Pac Master	TT	035666	815	225	190	145A2	C	2900/10	2300/15	8.75	6.00 (6.50)	-	-
10.5/80-16	6	BKT Pac Master	TL	485812	810	275	273	129A2	C	1850/10	1500/15	4.50	8.00	-	-
20"															
11.00-20**	16	BKT Pac Master SPL	TT	038962	1070	291	280	167A2	C	5450/10	4375/15	7.25	8.00 (8.50)	-	-
11.00-20**	18	BKT Pac Master SPL	TT	038963	1070	291	280	169A2	C	5800/10	4625/15	8.25	8.00 (8.50)	-	-
9.00-20	12	BKT Pac Master	TT	352756	1016	275	246	156A2	C	4000/10	3150/15	6.25	7.00 (7.50)	-	-
24"															
14.9-24	8	BKT TR 391 Industrial	TL	291895	1270	405	-	128A6	R3	1800/30	-	1.80	13.00 (11.00/12.00)	30	19
26"															
18.4-26	12	BKT TR 387	TL	291901	1450	485	-	146A6	R3	3000/30	-	2.30	16.00 (15.00)	-	24
23.1-26	12	BKT TR 387	TL	291918	1560	592	-	153A6	R3	3650/30	-	1.70	20.00	21	27
23.1-26	12	BKT TR 387 HD	TL	313122	1560	592	-	164A6	R3	5000/30	-	1.70	20.00	21	27
23.1-26	16	BKT TR 387	TL	380292	1560	592	-	159A6	R3	4375/30	-	2.30	20.00	21	27

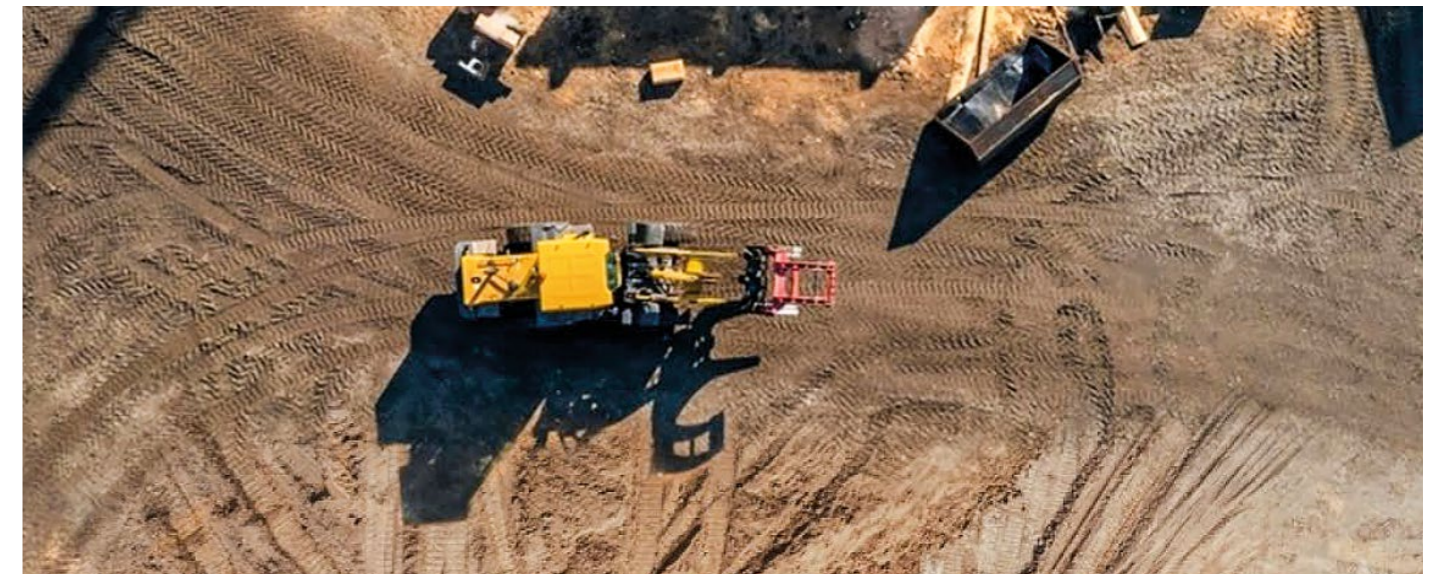
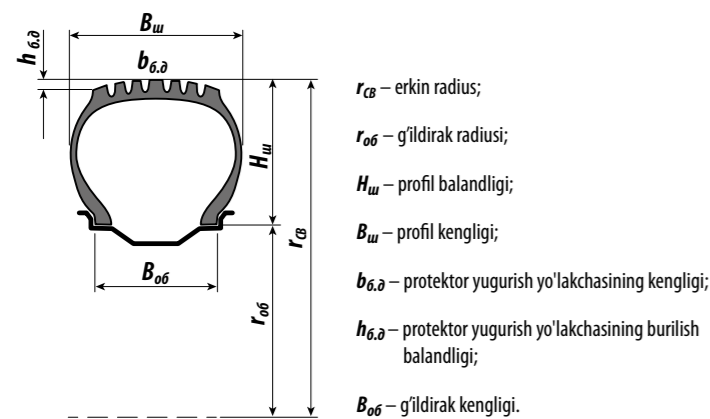
* Belgilangan tezlikda shinalarga tushadigan yuk

FR - erkin aylanadigan g'ildirak

DW - harakatlantiruvchi g'ildirak

** Shinalar to'plami sifatida taqdim etiladi (kameralar va g'ildirak lentasi bilan shinalar)

G'ildiraklarning geometric parametrlari



Tezlik indeksi jadvali

Tezlik indeksi bu ishlab chiqaruvchi tomonidan ko'rsatilgan foydalanish shartlariga to'liq rioya qilgan holda shina yuk indeksiga mos keladigan og'irlikni ko'taradigan maksimal tezlik uchun koddir

Tezlik indeksi	A2	A4	A6	A8	B	C	D	E	F	G	J	K
km/soat	10	20	30	40	50	60	65	70	80	90	100	110

Avtomobil kranlari uchun shinalar



O'LCHOV (RAZMER)	PROTEKTOR DIZAYNI	TL/TT	57 07562+	TASHQI DIAMETER (mm)	KENGLIGI (mm)	LJ/SI	TRA kod	kg/km/soat* (1)	kg/km/soat* (2)	MAKS. BOSIM (bar)	G'ILDIRAK ENI KENGLIGI (dyuym)	PROTEKTORNING CHUQURLIGI (mm)
24"												
385/95R24 (14.00R24)	BKT Airomax AM 27	TT	605371	1363	372	170F	E2	6000/80	-	9.00	10.00	22.5
25"												
385/95R25 (14.00R25)	BKT Airomax AM 27	TL	605388	1363	372	170F	E2	6000/80	-	9.00	10.00	22.5
445/95R25 (16.00R25)	BKT Airomax AM 27	TL	598727	1490	440	174F	E2	6700/80	5600/100	9.00	11.25 (11.00)	23.5
445/95R25 (16.00R25)	BKT Airomax AM 543	TL	598734	1480	435	177E	E2	7300/70	4375/100	9.00	11.25 (11.00)	25
505/95R25 (18.00R25)	BKT Airomax AM 27	TL	605401	1600	492	186E	E2	9500/70	5700/100	9.00	13.00	25
525/80R25 (20.5R25)	BKT Airomax AM 27	TL	035167	1481	530	176F	E2	7100/80	-	7.00	17.00	27.5

* Belgilangan tezlikda shinalarga tushadigan yuklanish
FR - erkin aylanadigan g'ildirak
DW - harakatlantiruvchi g'ildirak



BKT Airomax AM 27

BKT Airomax AM 543

Old yuklagichlar uchun shinalar



O'LCHOV (RAZMER)	SHINA QATLAMI DARAJASI	PROTEKTOR DIZAYNI	TL/TT	57 07562+	TASHQI DIAMETER (mm)	KENGLIGI (mm)	LJ/SI	TRA kod	Yulduzi reyting	kg/km/soat* (1)	kg/km/soat* (2)	MAKS. BOSIM (bar)	G'ILDIRAK ENI KENGLIGI (dyuym)	KOP-BO GPYHTO-3AЦEПOB	PROTEKTORNING CHUQURLIGI (mm)
25"															
15.5-25	12	BKT XL Grip	TL	035061	1285	402	-	E3/L3	-	5600/10	3250/50	4.00	12.00	28	25
15.5R25	-	BKT Earthmax SR 30 (CR)	TL	026587	1276	397	169A2/160B	E3/L3	**/*	5800/10	4500/50	5.25	12.00	34	27
17.5-25	16	BKT Loader Plus	TL	037478	1345	440	177A2	L3	-	7300/10	-	4.75	14.00	26	26.5
17.5-25	20	BKT XL Grip	TL	605012	1345	435	164B	E3/L3	-	8250/10	5000/50	5.75	14.00	26	25
17.5R25	-	BKT Earthmax SR 30 (CR)	TL	605203	1347	446	176A2/167B	E3/L3	**/*	7100/10	5450/50	5.25	14.00	32	29
20.5-25	20	BKT Loader Plus	TL	037483	1490	540	186A2	L3	-	8250/10	-	3.50	17.00	26	30
20.5R25	-	BKT Earthmax SR 30 (CR)	TL	437521	1487	529	186A2/177B	E3/L3	**/*	9500/10	7300/50	5.25	17.00	31	32
23.5-25	20	BKT Loader Plus	TL	037487	1640	610	191A2	L3	-	10900/10	-	3.75	19.50	26	33
23.5-25	24	BKT Loader Plus	TL	037488	1640	610	196A2	L3	-	12500/10	-	4.75	19.50	26	33
23.5-25	20	BKT Harvester Special (Dual Bead)	TL	038458	1665	615	191A2	R1	-	10900/10	-	3.75	19.00	21	46.5
23.5R25	-	BKT Earthmax SR 30 (CR)	TL	376189	1607	612	195A2/185B	E3/L3	**/*	12150/10	9250/50	5.25	19.00	29	34
23.5R25	-	BKT Earthmax SR 31 (CR)	TL	023115	1607	612	195A2/185B	E3/L3	**/*	12150/10	9250/50	5.25	19.00	-	35
26.5-25	28	BKT Loader Plus	TL	037489	1740	680	203A2	L3	-	15500/10	-	4.75	22.00	27	36.5
26.5-25	32	BKT Loader Plus	TL	037490	1740	680	206A2	L3	-	17000/10	-	5.50	22.00	27	36.5
26.5R25	-	BKT Earthmax SR 30 (CR)	TL	376196	1742	689	202A2/193B	E3/L3	**/*	15000/10	11500/50	5.25	22.00	28	38
26.5R25	-	BKT Earthmax SR 31 (CR)	TL	035118	1742	689	209A2	L3	**	18500/10	-	6.50	22.00	-	38
29.5-25	28	BKT Loader Plus	TL	037491	1860	760	207A2	L3	-	17500/10	-	4.25	25.00	26	39
29.5-25	32	BKT Loader Plus	TL	039949	1860	760	-	L3	-	19250/10	-	5.00	25.00	26	39
29.5R25	-	BKT Earthmax SR 30 (CR)	TL	605340	1861	765	208A2/200B	E3/L3	**/*	18000/10	14000/50	5.25	25.00	28	42
29.5R25	-	BKT Earthmax SR 31 (CR)	TL	035120	1861	765	216A2	L3	**	22400/10	-	6.50	25.00	28	42

* Belgilangan tezlikda shinalarga tushadigan yuklanish
FR - erkin aylanadigan g'ildirak
DW - harakatlantiruvchi g'ildirak

CR - CUT RESISTANT COMPOUND (kesilishga chidamli tarkib)
Dual Bead - ikkitalik bort (bort halqasining qalinligi odatdagidan 2 baravar kengroq)



BKT XL Grip

BKT Earthmax SR 30 (CR)

BKT Loader Plus

BKT Earthmax SR 31 (CR)

Ko'p maqsadli shinalar (MPT)



O'LCHOV (RAZMER)	PROTEKTOR DIZAYNI	TL/TT	57 07562+	TASHQI DIAMETER (mm)	KENGLIGI (mm)	LI/SI	kg/km/soat* (1)	kg/km/soat* (2)	MAKS. BOSIM (bar)	G'ILDIRAK ENI KENGLIGI (dyum)	GRUNTO-ZATSEPTLAR SONI	PROTEK-TORNING CHUQURLIGI (mm)
17"												
425/55R17	BKT Multimax MP 513	TL	484624	900	421	134G	2440/40	2120/90	3.50	13.00	17	28
18"												
365/70R18	BKT Multimax MP 513	TL	025889	969	360	133G	2370/40	2060/90	3.75	11.00 (12.00)	18	28.5
335/80R18 (12.5R18)	BKT Multimax MP 540	TL	040012	985	340	132K	2000/110	-	3.50	11.00	24	16
20"												
335/80R20 (12.5R20)	BKT Earthmax SR 33	TL	035121	1047	335	150K	3350/110	-	6.50	11.00	30	16.5
335/80R20 (12.5R20)	BKT Multimax MP 540	TL	029296	1044	340	149K	3250/110	3380/80	6.50	11.00	26	16.5
360/80R20 (14.5R20)	BKT Ridemax IT 696	TL	041134	1084	357	147A8/143D	3270/30	2725/65	4.00	11.00 (10.00/12.00)	39	25.5
365/80R20 (14.5R20)	BKT Earthmax SR 33	TL	036220	1096	360	152K	3550/110	-	6.20	11.00	30	16.5
365/80R20 (14.5R20)	BKT Multimax MP 540	TL	040538	1086	365	152K	3550/110	-	6.25	11.00	24	17
14.00R20	BKT Earthmax SR 33	TL	035122	1250	390	164/160J (166G)	5000/100 LS (5300/90)	4500/100 LD	7.50	10.00 (9.00)	33	23
395/85R20	BKT Earthmax SR 33	TL	026450	1184	394	168J	5600/100	-	8.50	10.00	32	25
405/70R20 (16.0/70R20)	BKT Multimax MP 515	TL	029300	1076	407	136G	2580/40	2240/90	3.50	13.00 (11.00/12.00)	18	28
405/70R20	BKT Multimax MP 538	TL	040747	1076	407	152G	4080/40	3550/90	6.00	13.00	23	26.5
405/70R20 (16.0/70R20)	BKT Multimax MP 525	TL	041507	1076	405	168A2/152J	5600/110	3550/100	6.00	13.00 (12.00)	-	23
405/70R20 (16.0/70R20)	BKT Multimax MP 540	TL	041511	1082	402	152K	3550/110	-	6.00	13.00 (12.00)	-	19.5
405/70R20 (16.0/70R20)	BKT Multimax MP 513	TL	604220	1076	407	136G	2580/40	2240/90	3.50	13.00 (12.00)	18	29
425/75R20	BKT Multimax MP 513	TL	566573	1146	421	148G	3625/40	3150/90	4.00	13.00 (11.00/12.00)	21	30
16.00R20	BKT Earthmax SR 33 Plus	TL	038028	1310	448	173/170G	6500/90	-	7.60	11.25 (10.00)	31	20
21"												
24R21	BKT Earthmax SR 331	TL	040859	1382	606	176G	7100/90	-	5.90	18.00	-	24
24"												
495/70R24	BKT Multimax MP 513	TL	029303	1304	499	155G	4460/40	3875/90	3.50	16.00 (15.00)	18	35

* Belgilangan tezlikda shinalarga tushadigan yuklanish

FR - erkin aylanadigan g'ildirak
DW - harakatlantiruvchi g'ildirak



BKT Multimax MP 513 BKT Multimax MP 540 BKT Earthmax SR 33 BKT Ridemax IT 696 BKT Multimax MP 538 BKT Multimax MP 525 BKT Earthmax SR 331

Ventillar

TR 87 V1-08-1 • 33 G 90		JS 2		TR 218A V4-01-1 • 47 GW	
A mm	19	A mm	-	A mm	24
B mm	33	B mm	33	B mm	63,5
C mm	15	C mm	26	C mm	47
D mm	44,5	D mm	56	D mm	16
Z	90°	Z	70°		
TR 75A V3-09-03		TR 78A V3-09-8		TR 177A V3-09-5	
A mm	24	A mm	24	A mm	24
B mm	76	B mm	127	B mm	95
Z	86°	Z	86°	Z	86°
TR 13 V2-01-1 • 38 G 11,5		TR 13 V2-01-1 • 38 G 16			
A mm	35	A mm	35		
B mm	56	B mm	56		
C mm	11,5	C mm	16,5		
TRJ 1175C 105A		TR 618A V5-01-1		TR 413 V2-03-1	
A mm	35	A mm	22	A mm	19
B mm	105	B mm	15,9	B mm	23,5
C mm	4	C mm	3	C mm	19
D mm	32	D mm	29	C mm	29
Z	88°				
V3-02-7		V3-04-5 127 D-74		V3-02-19 60 D	
A mm	22,5	A mm	20	A mm	20,5
B mm	71,5	B mm	76	B mm	60
C mm	-	C mm	47,5	C mm	-
Z1	80°	Z1	90°	Z1	86°
Z2	-	Z2	27°	Z2	-
V3-06-3		V3-06-8			
A mm	20,5	A mm	24,5		
B mm	46	B mm	61,5		
F mm	20,5	F mm	14,5		
H mm	47,5	H mm	50,5		
G mm	17	G mm	7,5		
Z1	90°	Z1	86°		
Z2	40°	Z2	27°		
Z3	140°	Z3	153°		

Kameralar

O'LCHOV (RAZMER)	SHINA O'LCHAMI UCHUN	VENTIL	57 07562+	QADOQDAGI MIQDORI
12"				
23x8.50-12	23X8.50-12, 23X10.00-12, 23X10.50-12, 23X9.50-12, 24X10.50-12, 24X8.50-12	TR13	154718	20
14"				
27x8.50-14	27X8.50-14	TR13	153551	22
15"				
27x8.50-15	27X8.50-15, 28X9.00-15	TR13	153148	20
15.3"				
10.0/75-15.3	10.0/75-15.3	TR218A	136141	14
11.5/80-15.3	11.5/80-15.3, 12.5/80-15.3	TR218A	153063	12
16"				
7.00-16	7.00-16, 7.50-16, 8.75-16.5	TR75A	137681	16
7.00-16	7.00-16, 7.50-16, 8.75-16.5	V3-04-7	148632	20
16.5"				
10-16.5	10-16.5	TR15	135953	18
12-16.5	12-16.5	TR15	136165	12
18"				
10.5/80-18	10.5/80-18, 13.0/65-18, 275/80-18, 335/65-18	TR218A	154435	10
12.5/80-18	12.5/80-18, 15.0/70-18, 335/80-18	TR218A	154459	8
20"				
8.25-20	8.25-20	V3-06-3	148731	14
12.5/80-20	12.5/80-20, 12.5-20, 355/80-20	TR218A	136295	7
16.0/70-20	16.0/70-20, 405/70-20, 400/70-20, 13.00-20	TR218A	136615	5
16.0/70-20	16.0/70-20, 405/70-20, 400/70-20, 13.00-20	V3-04-5	153094	5
16.00-20	16.00-20	V3-06-8	148915	3
9.00-20	9.00-20	V3-06-3	148755	8
10.00-20	10.00-20	V3-06-8	148786	8
11.00-20	11.00-20, 13/80-20, 335/80-20	V3-06-8	148816	7
14.00-20	14.00-20, 15.5/80-20, 365/85-20	V3-06-8	148908	4
24"				
13.00-24/25	13.00-24, 13.00-25	TRJ1175C	136325	5
14.00-24	14.00-24	V3-04-5	136431	4
14.00-24/25	14.00-24, 14.00-25, 15.5-25	TRJ1175C	154374	4
14.9-24	14.9-24, 380/85-24, 380/90-24	TR218A	136462	4
15.5/80-24	15.5/80-24, 16.0/70-24, 16.5/85-24, 405/70-24	TR218A	153124	4
16.9-24	16.9-24, 420/85-24, 480/70-24, 17.5L-24, 460/70-24, 500/70-24	TR218A	136660	4
16.00-24/25	16.00-24, 16.00-25, 17.5-25	TRJ1175C	153117	3
18.00-24/25	18.00-24, 18.00-25, 20.5-25	TRJ1175C	153100	2
25"				
13.00-24/25	13.00-24, 13.00-25	TRJ1175C	136325	5
14.00-24/25	14.00-24, 14.00-25, 15.5-25	TRJ1175C	154374	4
16.00-24/25	16.00-24, 16.00-25, 17.5-25	TRJ1175C	153117	3
18.00-24/25	18.00-24, 18.00-25, 20.5-25	TRJ1175C	153100	2
23.5-25	23.5-25, 26.5-25	TRJ1175C	154473	2
26.5-25	26.5-25	TRJ1175C	137162	2
29.5-25	29.5-25	TRJ1175C	137223	1
26"				
16.9-26 MASTERLINE	16.9-26, 18.4-26, 480/70-26, 520/70-26, 540/65-26	TR218A	038232	1
16.9-26	16.9-26, 18.4-26, 480/70-26, 520/70-26, 540/65-26	TR218A	154503	4
23.1-26	23.1-26, 580/70-26, 620/75-26	TR218A	137063	2
28"				
16.9-28 MASTERLINE	16.9-28, 18.4-28, 480/65-28, 480/70-28, 540/65-28	TR218A	038231	2
16.9-28	16.9-28, 18.4-28, 480/65-28, 480/70-28, 540/65-28	TR218A	154558	4
30"				
16.9-30	16.9-30, 18.-30, 420/85-30, 460/85-30, 500/70-30, 540/65-30, 480/70-30	TR218A	154565	3

G'ildirak lentalari

O'LCHOV (RAZMER)	SHINA O'LCHAMI UCHUN	57 07562+	QADOQDAGI MIQDORI
16"			
160-16	6.00-16, 7.00-16, 7.50-16	153902	18
20"			
180-20	8.25-20, 9.00-20, 10.00-20	152981	14
190-20	8.25-20, 9.00-20, 10.00-20	153933	10
200-20	10.00-20, 11.00-20, 12.00-20, 13/80-20	152998	12
230-20	10.00-20, 11.00-20, 12.00-20, 14.00-20, 13/80-20	153940	8
280-20	14.00-20, 14/80-20	153957	4
310-20	12.5-20, 14.5-20, 16.00-20	153964	4
24"			
260-24	13.00-24, 14.00-24	153988	6
275-24	16.00-24, 16.00-25	153995	6
25"			
310-25	15.5-25, 16.00-25	154008	3
360-25	17.5-25, 18.00-25	154015	3
440-25	20.5-25, 20-24	154022	2
480-25	23.5-25	154039	2
580-25	26.5-25	154046	2



Tubeless Rim Lenta quvursiz (TL) shinalarni standart sanoat avtomobil jantlariga o'rnatishga imkon beradi, ular dizayni tufayli odatda trubka va jant tasmasi bo'lgan shinalar bilan o'rnatiladi.

Quvursiz jant lentasi (TSF Tubeless Sealing Flap) halqaning silindrsimon qismiga tubeless shinaning boncuklari orasiga o'rnatiladi.

Bohnenkamp

 Moving Professionals

SIFATNI

TEKSHIRISH



1950-yilda mintaqaviy avtomobil ehtiyot qismlari sohasidagi savdo kompaniyasi sifatida tashkil etilgan Bohnenkamp Group bugungi kunda o'z mahsulotlarini butun Yevropa bo'ylab professionalarga yetkazib beradi. Har tomonlama maslahat berish, ishonchli xizmat ko'rsatish va mijozlar bilan jonli aloqada bo'lish Guruh tashkil etilganidan beri doimo bizning e'tiborimiz va faoliyatimiz markazida bo'lib kelgan.

Bizning mahsulotlarimiz assortimenti qishloq xo'jaligi, o'rmon xo'jaligi, tog'-kon sanoati, qurilish, yuk tashish va boshqa maxsus texnikalar uchun shinalar, diskalar, kameralar, komplektlovch qismlar va boshqa komponentlarni o'z ichiga oladi.

Ulgurji kompaniya sifatida biz hamkorlarimizga - ixtisoslashgan dilerlar va texnikalar ishlab chiqaruvchilarga to'liq tayanamiz. Bizning mutaxassislarimiz individual foydalanuvchilarga ham, yirik texnikalar parklariga (egalariga) ham maslahatlar beradi, shuningdek, mashina va uskunalar ishlab chiqaruvchilari uchun OEM komponentlarini yetkazib berish bo'yicha maxsus yechimlarni ishlab chiqishda yordam beradi.

Dilerlar va turli sohalardagi texnikalardan foydalanuvchilar bilan doimiy muloqot tufayli biz bozorning yangi talablariga tezkor va moslashuvchan tarzda javob bera olamiz. Shunga asoslanib, biz doimiy ravishda mahsulotlarimiz assortimentini kengaytirmoqdamiz va turli sohalarda xizmat ko'rsatishni rivojlantirmoqdamiz. Shinalar yoki komplektlovchi qismlardan torib, kameralar yoki boshqa komponentlar, standart mahsulotlar yoki yangi texnikalar uchun maxsus ishlanmalargacha barcha mahsulotlarimiz sifati va ishonchliligi, uzoq xizmat muddati va tejamkorligi bilan ajralib turadi.

Ishlab chiqarishdan tortib kichik yoki katta hajmdagi mahsulotlarni o'z vaqtida yetkazib berishgacha bo'lgan barcha bosqichlarni o'z ichiga olgan xizmatimiz doimo mijozlarimiz uchun tayyor.

Bu OEM komponentlarini yetkazib berish bo'yicha xizmatimizni ham o'z ichiga oladi.

Biz maxsus texnikalar uchun maxsus moslashtirilgan (mo'jallangan) butlovchi qismlarni yetkazib beramiz: bunga alohida o'q komponentlaridan tortib treylerlar va maxsus mashinalar uchun komplektlovchilar kiradi.

Biz hamkorlarimizga, jumladan, shinalar sotuvchilari, qishloq xo'jaligi va boshqa maxsus texnika yetkazib beruvchilar, servis markazlariga kerak bo'ladigan hamma narsani taklif qilishga tayyormiz. Ular qatoriga ushbulani kiritish mumkin: mahsulotlarning keng assortimenti, omborlar mavjudligi va qulayligi, yuqori darajadagi xizmat ko'rsatish, shaxsiy maslahatlar, individual yechimlar va o'z vaqtida yetkazib berish.

Barcha ishlab chiqariladigan va yetkazib beriladigan mahsulotlarga butun xizmat muddati davomida hech qanday cheklovlarsiz Bohnenkamp kompaniyasining ISHLAB CHIQRUVCHINING STANDART KAFOLATI va OO'SHIMCHA KAFOLATI amal qiladi. Bunda iste'molchilarning da'volarini tezkor ko'rib chiqish va mahsulotni yangisiga almashtirish yoki ishlab chiqarishdagi nuqsonlar aniqlangan taqdirda kompensatsiya to'lashni ta'minlash nazarda tutiladi.



www.bohnenkamp.uz

www.bohnenkamp.uz